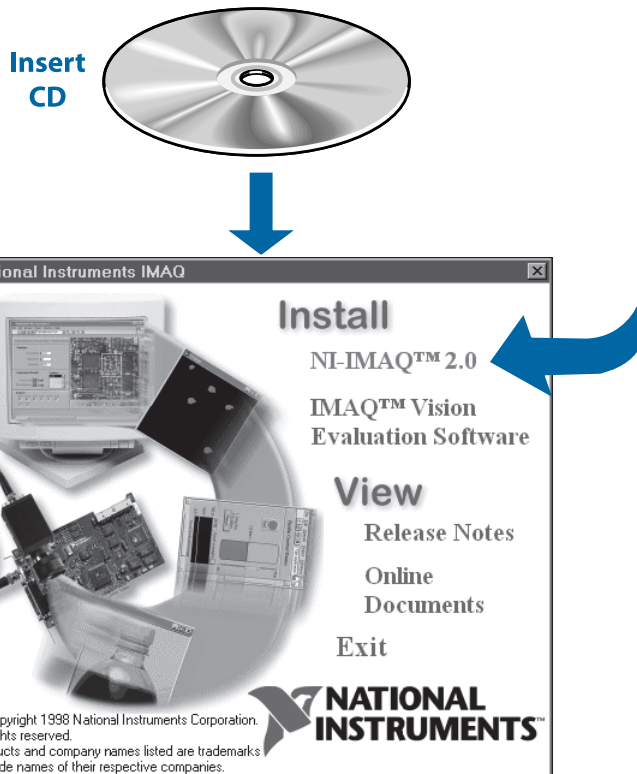


Setup and Test the PCI-1424

1 Install Your Software



Need more information?
See the *IMAQ PCI-1424 User Manual*.

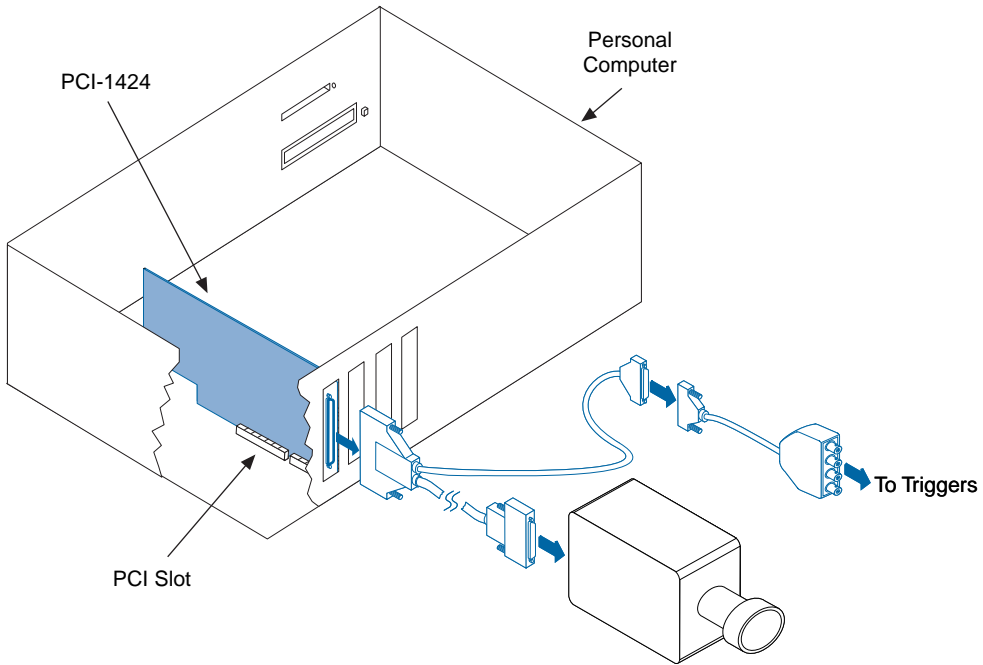
2

Install Your PCI-1424 and Connect Your Camera



Caution

Turn the power off before installing your hardware.



Note

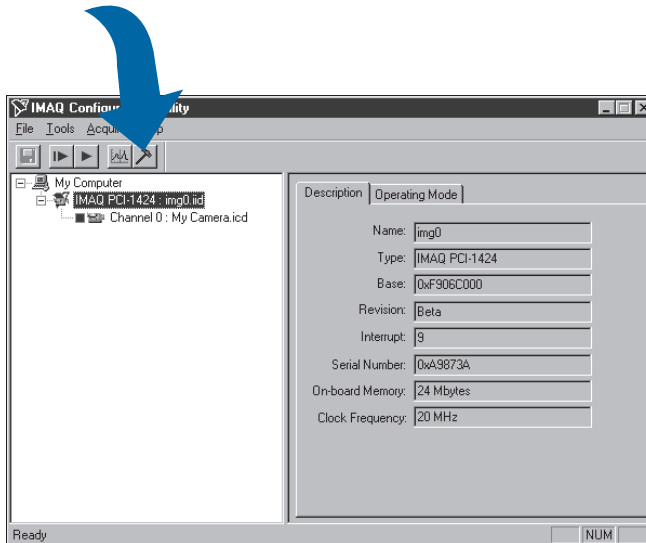
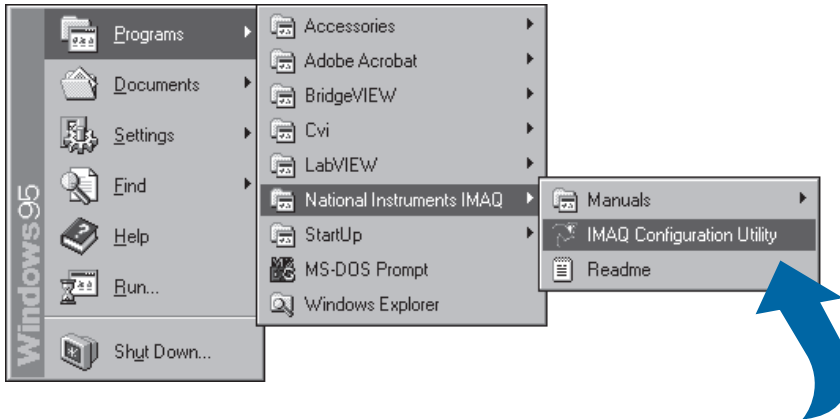
Follow the instructions in your computer documentation to install the PCI-1424 device.



Need more information?
See the *IMAQ PCI-1424 User Manual*.

3

Run the IMAQ Configuration Utility and the IMAQ Diagnostics

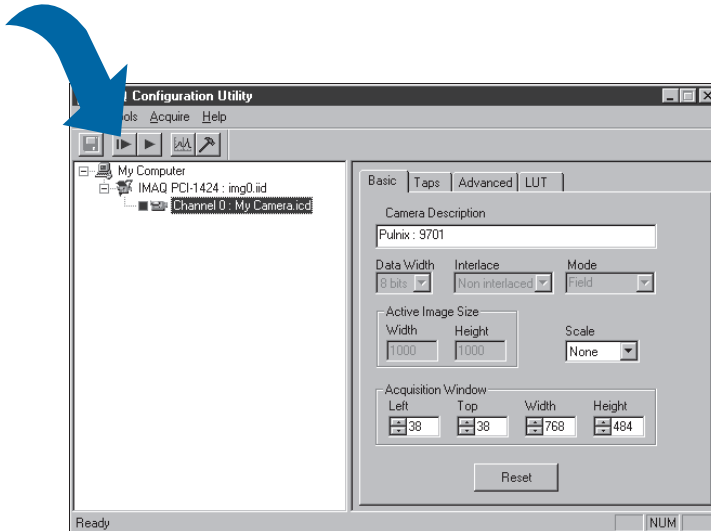
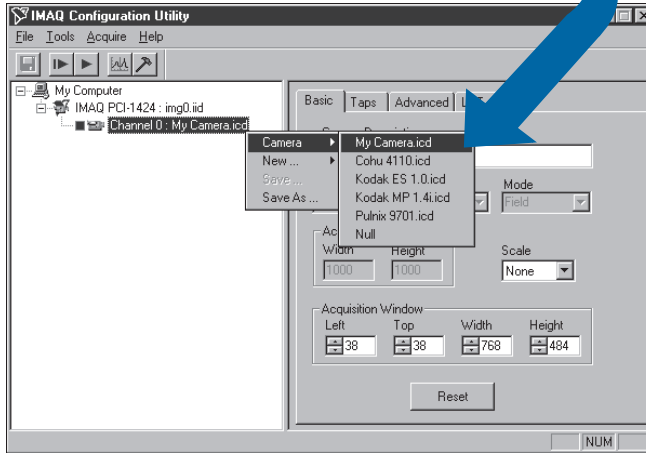


**Need more information?
See the IMAQ Configuration Utility online help.**

4

Select the Camera File and Acquire an Image

Click on the channel using the right mouse button.



**Need more information?
See the IMAQ Configuration Utility online help.**

BridgeVIEW™, CVI™, IMAQ™, LabVIEW™, NI-DAQ™, NI-IMAQ™, and StillColor™ are trademarks of National Instruments Corporation. Product and company names are trademarks or trade names of their respective companies.

© Copyright 1998 National Instruments Corporation. All rights reserved.



321887A-01

Jun98